



## Activity Kit

# Larry Gets Lost

## Activity Kit



Choose from the suggested activities below  
to make your event easy and fun

### ACTIVITY 1: LARRY & PETE COLORING SHEETS

RECOMMENDED MATERIALS: crayons, colored pencils, magic markers

### ACTIVITY 2: MAKE THE PAPERCRAFT FAMILY CAR

1. Carefully cut out car along the red & white lines
2. Fold along the dotted lines as shown
3. Glue the tabs and complete the car

RECOMMENDED MATERIALS: scissors, craft glue

### ACTIVITY 3: LARRY GETS LOST MAZE

RECOMMENDED MATERIALS: crayons, colored pencils, magic markers

### ACTIVITY 4: LEARN TO DRAW LARRY THE PUP

1. Follow the step-by-step instructions to draw your own Larry

RECOMMENDED MATERIALS: pencils, erasers, blank paper

### ACTIVITY 5: LARRY GETS LOST IN YOUR STORE SCAVENGER HUNT

#### 1. option a)

Hang copies of the poster around your store

#### option b)

Hide multiple Larry Plush Dolls around your store.



LARRY PLUSH DOLL  
\$8.95, ISBN: 978-1-57061-608-2

2. Gather participants. Give them five minutes to run around the store and find/count the Larrys
3. Ring/blow the bell/whistle to start. Ring/blow the bell/whistle to stop.
4. If you use the poster, make sure each participant goes home with one.

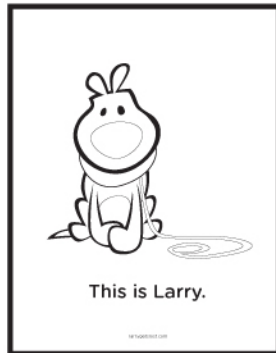
RECOMMENDED MATERIALS: posters, whistle or bell, Larry plush dolls (available for purchase through Random House)

## How to host & promote your Larry Gets Lost event

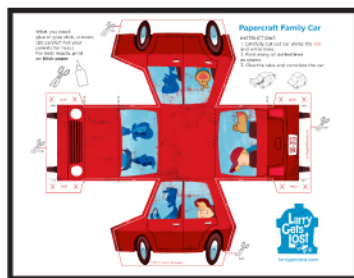
- Order copies of the Larry Gets Lost book for your region. Build a swell display in your store to generate interest in the event. See your RH sales rep or call 800-733-70000 to order books.
- Promote the event through your website, newsletter, twitter, blog, Facebook, etc.
- Spread the word via local school and public librarians & teachers
- Use Evite to send out invitations
- Mention the event in your email signature
- Take lots of photos at your event to send to participants
- Post photos to your website, newsletter, and Facebook page



# Contents



Coloring pages



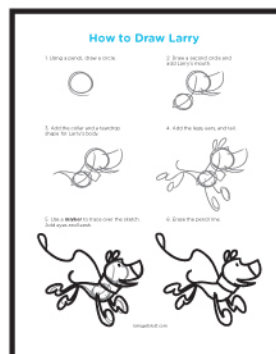
Papercraft



Maze (color)



Maze  
(black and white)



How to draw  
Larry



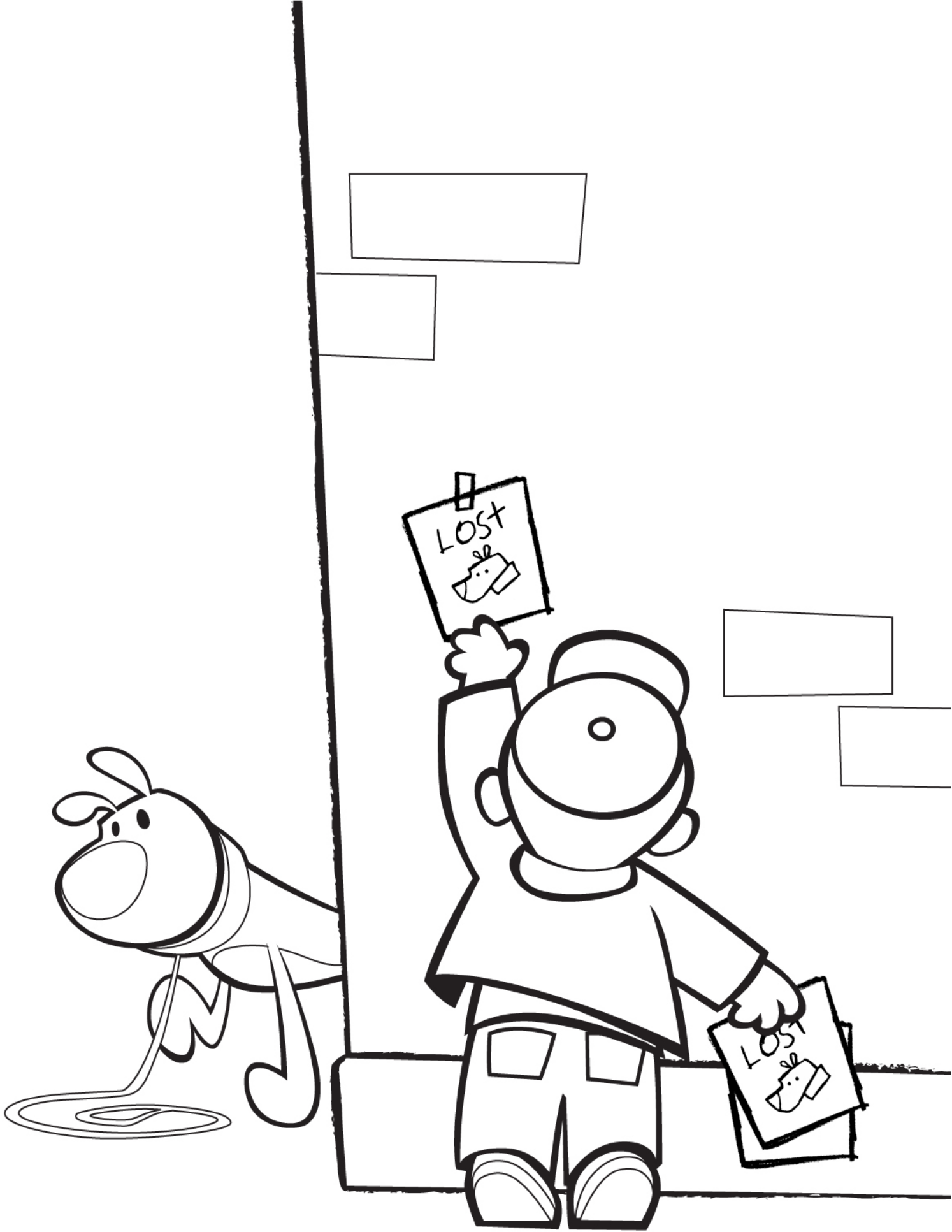
Scavenger hunt  
poster



**This is Larry.**



**This is Pete.**



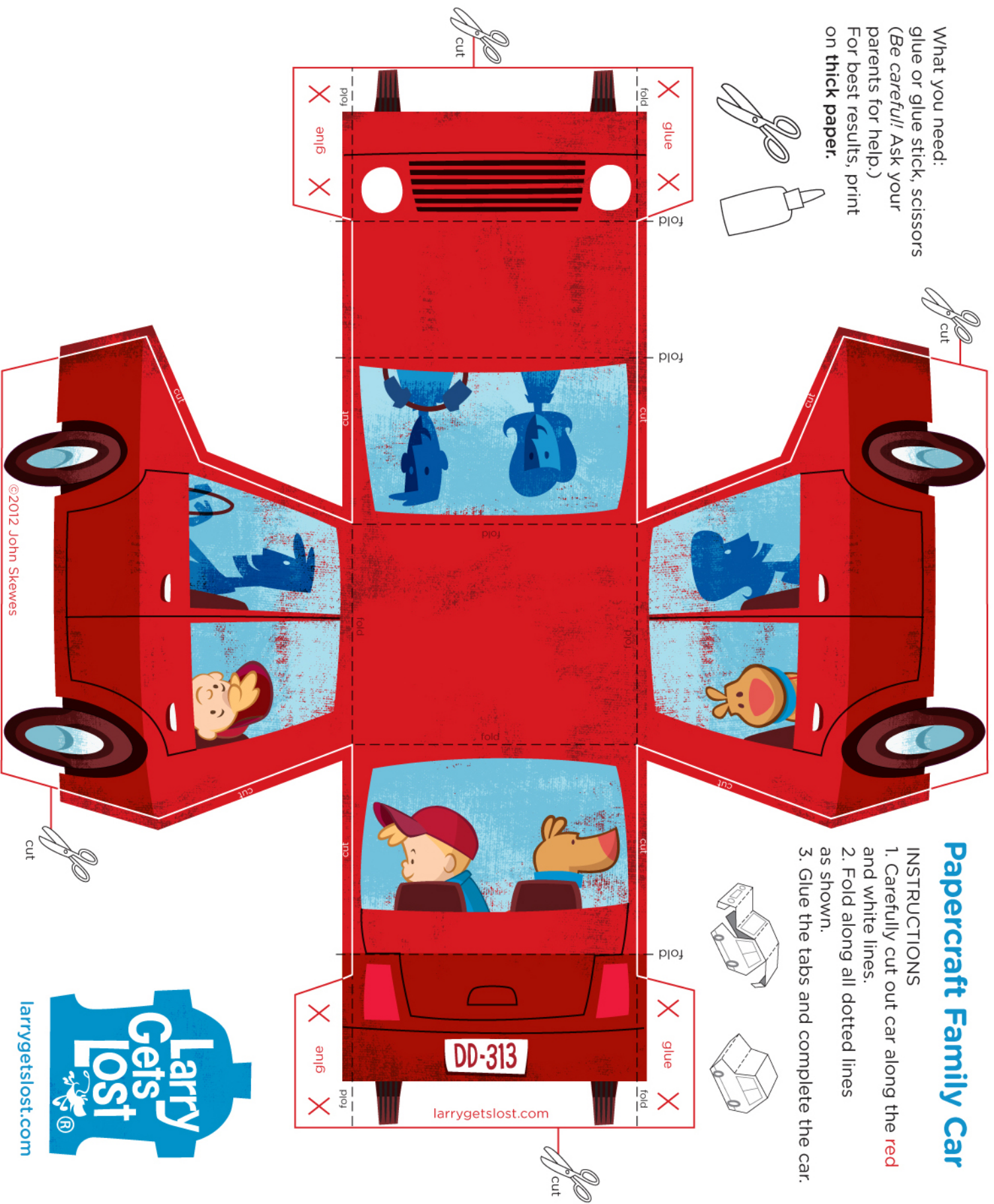
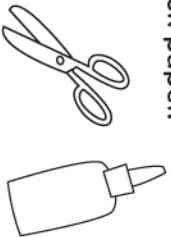


# Papercraft Family Car

## INSTRUCTIONS

1. Carefully cut out car along the **red** and white lines.
2. Fold along all dotted lines as shown.
3. Glue the tabs and complete the car.

What you need:  
glue or glue stick, scissors  
(*Be careful!* Ask your  
parents for help.)  
For best results, print  
on **thick paper**.



Help Larry find his friend Pere.

Seattle

Portland

Start

San Francisco

Los Angeles

Denver

Minneapolis

Saint Paul

Chicago

Dallas

Houston

Atlanta

Tampa

Boston

New York

Philadelphia

End

Larry Gets Lost

SASQUATCH BOOKS

www.SASQUATCHBOOKS.COM

sasquatchbooksblog.com



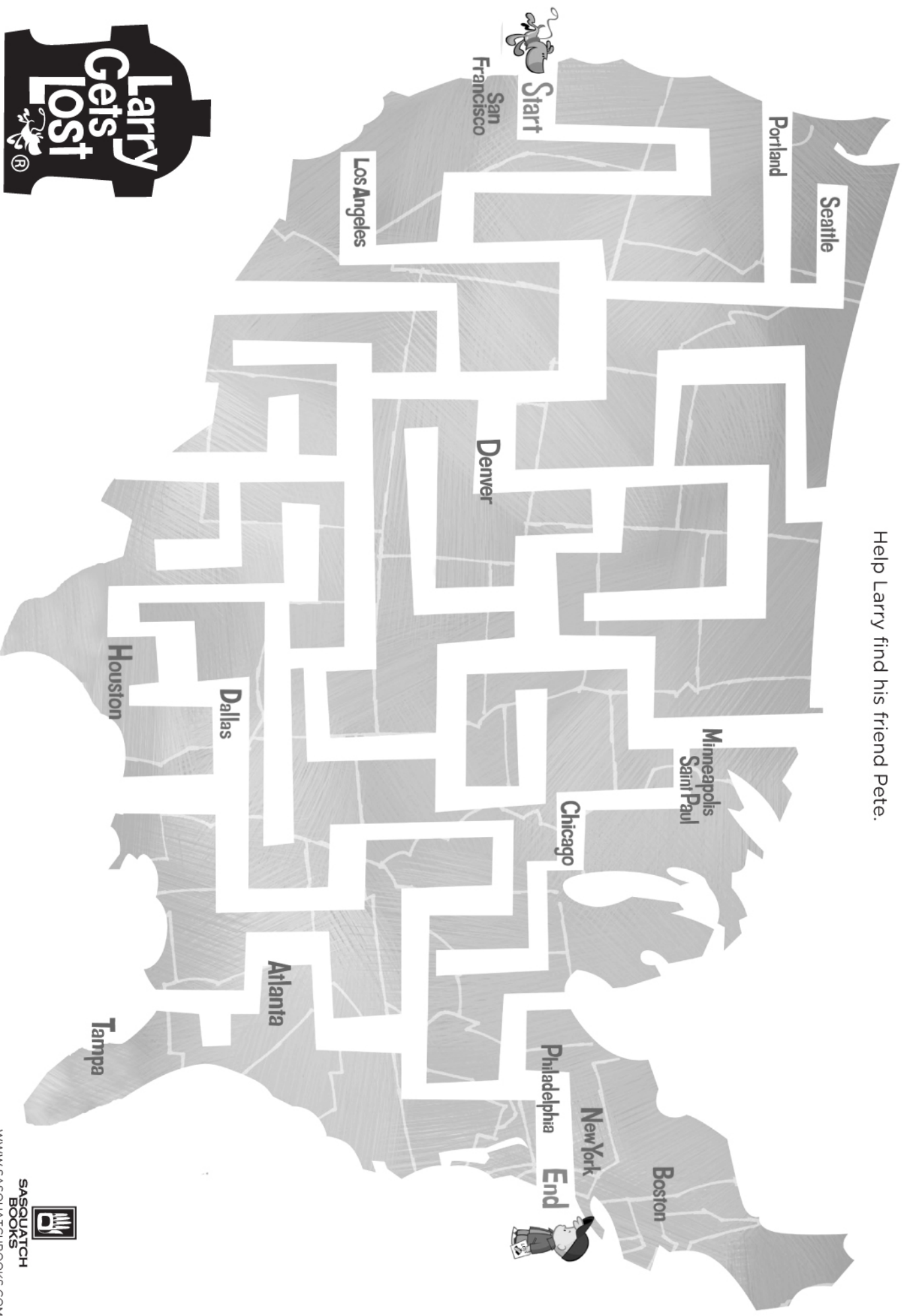
Tampa



**SASQUATCH  
BOOKS**  
WWW.SASQUATCHBOOKS.COM  
sasquatchbooksblog.com



Help Larry find his friend Pete.



[larrygetslost.com](http://larrygetslost.com)



**SASQUATCH  
BOOKS**

[WWW.SASQUATCHBOOKS.COM](http://WWW.SASQUATCHBOOKS.COM)

[sasquatchbooksblog.com](http://sasquatchbooksblog.com)

# How to Draw Larry

1. Using a pencil, draw a circle.



2. Draw a second circle and add Larry's mouth.



3. Add the collar and a teardrop shape for Larry's body.



4. Add the legs, ears, and tail.



5. Use a **marker** to trace over the sketch. Add eyes and leash.



6. Erase the pencil line.



HAVE YOU  
SEEN

ME ?

